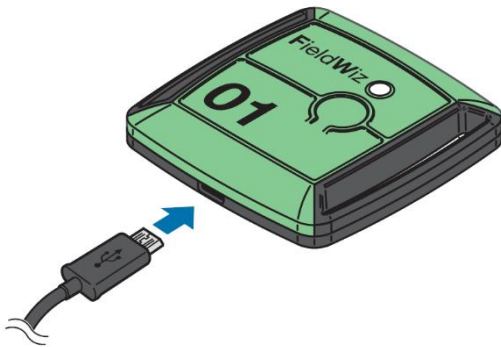


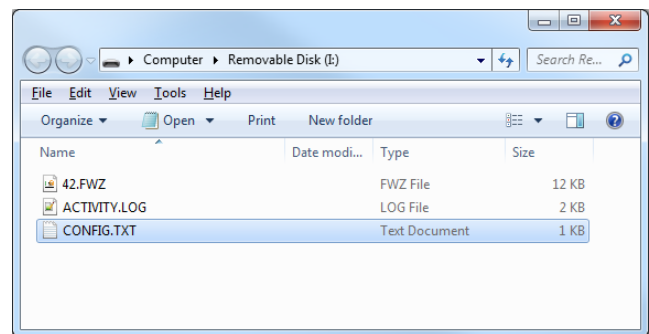
Heart Rate Monitor Pairing

How to pair FieldWiz with Zephyr HxM

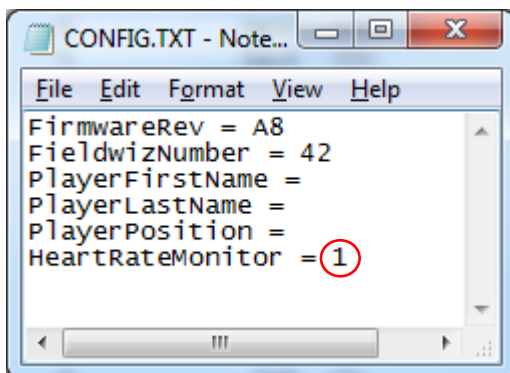
- 1) Connect your FieldWiz to a computer
- 2) Remove the data file .fwz and activity.log



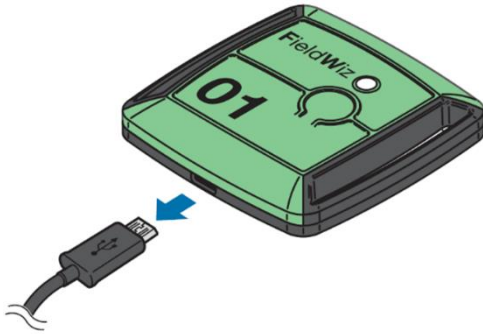
- 3) Open CONFIG.TXT



- 4) Add 1 to the parameter "HeartRateMonitor = 1"
Save and close



1. Disconnect the FieldWiz



- 5) Get in a zone without other Bluetooth devices and with only one HxM and FieldWiz ON

- 6) Wear the HxM (Here you can wear it on the front and hold the GPS in your hand, it has to be at a line of sight)



- 7) Turn the FieldWiz ON
- 8) The FieldWiz will search a powered Zephyr (wearing a Zephyr power it automatically)

The led will blink really fast while the FieldWiz search a Zephyr



- 9) Once paired the led will blink as previously again

Check the pairing:

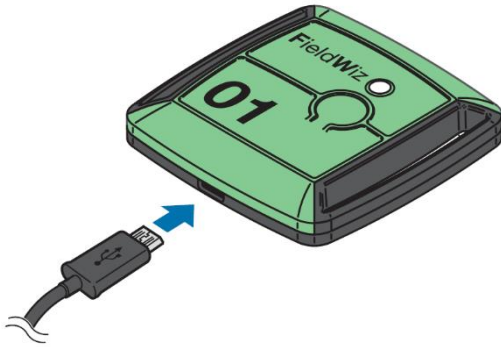
- 10) Connect the FieldWiz
- 11) Check the config.txt, the line "HeartRateMonitor" should have the Bluetooth address of the HxM. E.g. "00053df76j3"
- 12) If you have several devices, use a sticker to number the HxM accordingly to the Pod number

You are now ready to use it.

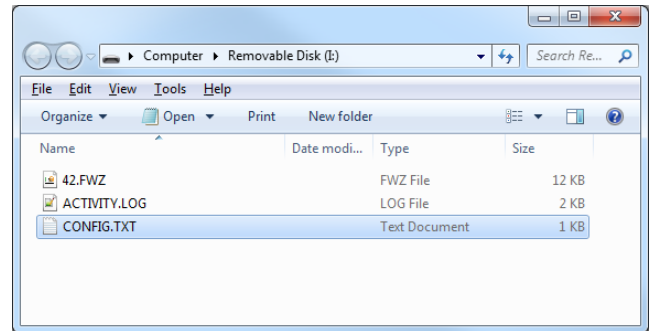
IMPORTANT: Wear the HxM on your back near the FieldWiz

How to deactivate

- 1) Connect your FieldWiz to a computer



- 2) Open CONFIG.TXT



- 3) Deactivate the heart rate by **CLEARING** the Bluetooth address
Save and close.

